

FLEX - PLUS 4000-4000

Led Strip

Alimentazione / Operating Voltage	24 V
Potenza / Power	22 W/mt
Larghezza Pcb / Width Pcb	12 mm
Altezza / Height Stripe	2 mm
Lunghezza / Length Stripe	5000 mm
Taglio segmento/ Length per Cut	62 mm
N° LED	128 / mt
IP	20
Temperatura esercizio Storage Temperature	- 30° C - + 70°C
Lifetime	L70B20 50000H



	Flusso Luminoso Luminous Flux	Efficienza Efficiency	Colore Luce Led Color
DA-PLUS-4000-4000	3719 lm/mt	135 lm/W	4000 K



Via Cadorna, 40/42
20032 Cormano (MI)
Tel. +39 02 84269630
Fax +39 02 84269631
info@dadalighting.com
www.dadalighting.com

FLEX - PLUS 4000-4000

Led Strip

Light efficiency:



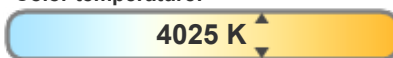
Output: 3719 lm

Light quality:



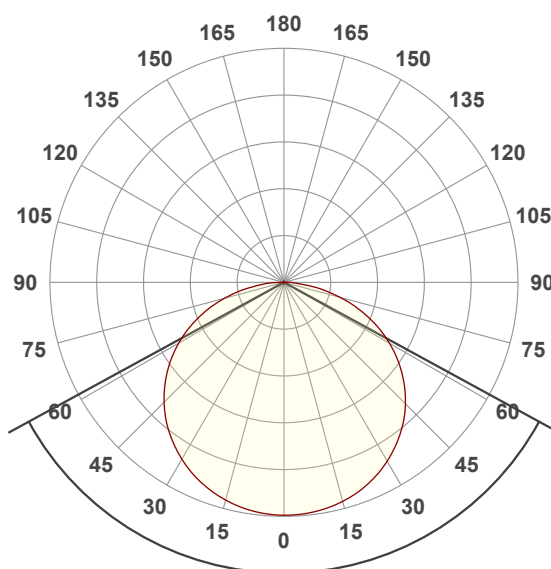
Peak: 1149 cd

Color temperature:



Power: 22,0 W

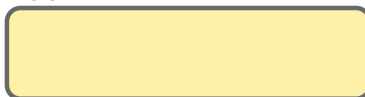
24,0V @ 0,917A



Beam angle

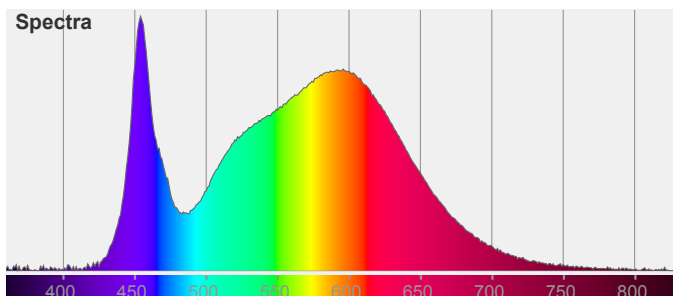
122,7°

Color



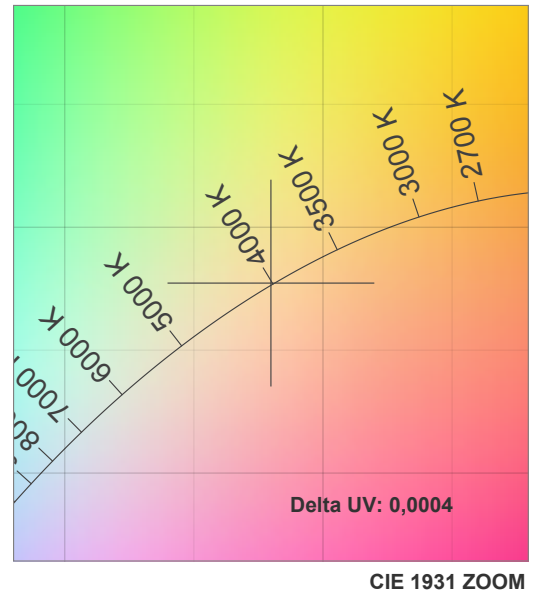
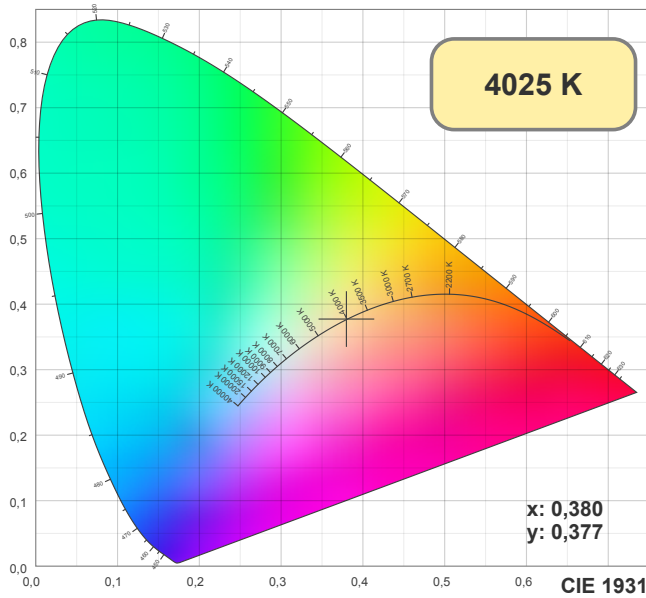
CIE1931
x: 0,380
y: 0,377

Spectra

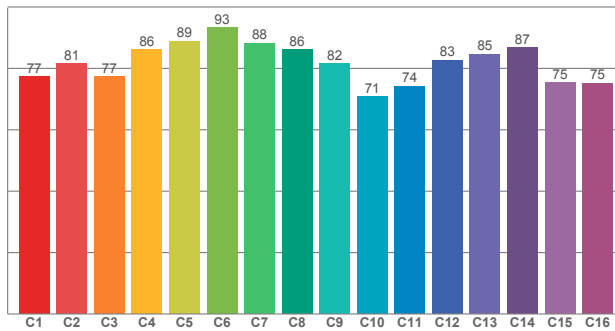


FLEX - PLUS 4000-4000

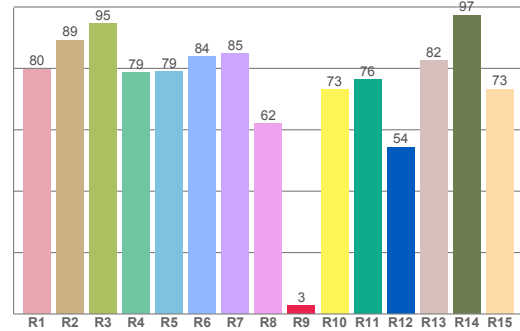
Led Strip



TM30: 81,6



CRI: 81,5 (R1-R8)



CRI R values, only R1-R8 are used to calculate final CRI value

R1	R2	R3	R4	R5	R6	R7	R8	R9	R10	R11	R12	R13	R14	R15
79,79	89,24	94,65	78,53	78,86	83,84	84,75	61,94	2,69	73,14	76,25	54,35	82,45	97,29	73,17

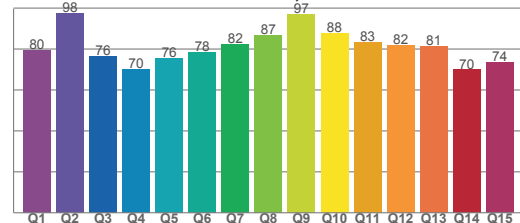
TM30 C values, 16 binned values out of total of 99 C values

C1	C2	C3	C4	C5	C6	C7	C8	C9	C10	C11	C12	C13	C14	C15	C16
77,37	81,50	77,38	86,06	88,84	93,20	88,24	86,01	81,53	70,87	74,22	82,67	84,61	86,70	75,43	75,21

CQS Q values

Q1	Q2	Q3	Q4	Q5	Q6	Q7	Q8	Q9	Q10	Q11	Q12	Q13	Q14	Q15
79,58	97,56	76,46	70,18	75,68	78,49	82,31	86,97	97,23	87,81	83,18	81,76	81,39	69,90	73,68

CQS: 79,8

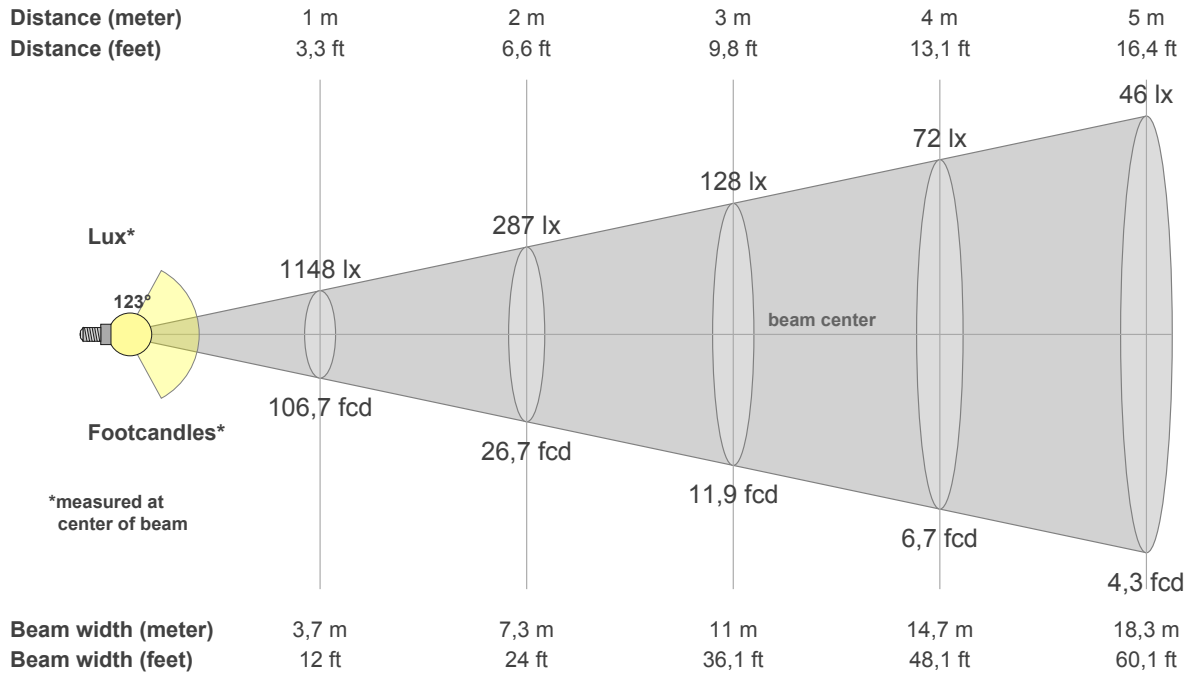


Color parameters

CCT	CRI	CRI R9	TM30 Rf	TM30 Rg	CQS	x	y	u	v	Duv
4025 K	81,5	2,7	81,6	93,2	79,8	0,4	0,4	0,2	0,3	0,0004

FLEX - PLUS 4000-4000

Led Strip



Intensities in 0° c-plane

0°	5°	10°	15°	20°	25°	30°	35°	40°	45°	50°	55°	60°	65°	70°	75°	80°	85°	90°	95°
1148	1147	1136	1118	1095	1060	1018	970	912	846	774	690	600	504	398	290	181	89	31	2
100%	100%	99%	97%	95%	92%	89%	84%	79%	74%	67%	60%	52%	44%	35%	25%	16%	8%	3%	0%

Intensities in 0° c-plane

0°	5°	10°	15°	20°	25°	30°	35°	40°	45°	50°	55°	60°	65°	70°	75°	80°	85°	90°	95°
1148	1147	1136	1118	1095	1060	1018	970	912	846	774	690	600	504	398	290	181	89	31	2
100%	100%	99%	97%	95%	92%	89%	84%	79%	74%	67%	60%	52%	44%	35%	25%	16%	8%	3%	0%

Intensities in 180° c-plane

0°	5°	10°	15°	20°	25°	30°	35°	40°	45°	50°	55°	60°	65°	70°	75°	80°	85°	90°	95°
1148	1144	1133	1111	1084	1051	1006	957	902	835	763	686	598	506	408	305	203	106	42	5
100%	100%	99%	97%	94%	92%	88%	83%	79%	73%	66%	60%	52%	44%	36%	27%	18%	9%	4%	0%

Intensities in 180° c-plane

0°	5°	10°	15°	20°	25°	30°	35°	40°	45°	50°	55°	60°	65°	70°	75°	80°	85°	90°	95°
1148	1144	1133	1111	1084	1051	1006	957	902	835	763	686	598	506	408	305	203	106	42	5
100%	100%	99%	97%	94%	92%	88%	83%	79%	73%	66%	60%	52%	44%	36%	27%	18%	9%	4%	0%

Beam angle 50%	Field angle 10%	Cutoff angle 2,5%	Intensity ratio in 120° cone	Intensity ratio in 90° cone
122,7°	168,1°	181,5°	74,8%	49,5%